

WESTERN MONTANA GENEALOGICAL SOCIETY NEWSLETTER

P.O. BOX 2714
MISSOULA, MT 59806

EDITOR: JUDITH FIELD
317 Livingston Ave.
Missoula, MT 59801

FEBRUARY 1984

OFFICERS:

President: Judith Field
Vice-President: Harold Fisher
Treasurer: Pat Culver
Rec. Secretary: Lois Dodge
Corr. Secretary: Barbara Johnson

MEMBERSHIP:

Dues: which include the monthly Newsletter and the Bulletin, are \$10.00 per year for individuals and institutions, and \$12.00 per year for families.

Dues may be sent to;
Western Montana Genealogy Soc.
P.O. BOX 2714
Missoula, MT 59806

MEETINGS: are held the second Thursday of the month (Sept-May) at the Meeting Room of the Western Federal Savings and Loan, Southgate Branch, 2601 Garfield, Missoula, MT. at 7:30 P.M.

Querries: may be sent to the editor at the above address. They are published free for members and are \$1.00 per query for non-members.

February Meeting: will be Thurs., February 9 th. We will not have a speaker this month, but will meet to discuss the upcoming Genealogy Fair which has been scheduled for Saturday, May 5 th, at the Missoula County Library from 10:00 A.M.-4:00 P.M. Your input and help will be needed to make our fair a success.

An interest has also been expressed in making some purchases for the Genealogy Collection at the County Library. Of particular interest would be indexes to microfilm or microfiche collections of state records that we could buy so that we could then order films on inter-library loan. If you know of any such records please let us know.

New or updated additions to our Surname File are always welcome. We will try to have the file at every meeting for you to use and add to.

Family Registry: as mentioned in our last Newsletter this is a new service being offered free of charge by the Church of Jesus Christ of Latter-day Saints. The forms for submitting surnames are now available at the Branch Library here in Missoula. Since they do not have a large supply of forms, it has been suggested that you take one and have it copied for each surname that you wish to submit.

NEW HOURS AT THE BRANCH LIBRARY:

Starting March 1, 1984 the Branch Genealogy Library will be open as follows:
Tue-Wed_Thur 12-4:00 P.M.
7-9:30 P.M.
Saturdays 9:00 A.M.-1:00 P.M.

COMPUTING: the Jan-Feb 1984 edition of the Genealogical Helper arrived last week with a new regular column "COMPUTER HELPER". They will be including special articles and advertisements pertaining to the computer and genealogy. Readers are encouraged to submit articles for this new column.

The St. Louis Genealogical Society has announced the publication of a new 1983 Surname Index with a section for members names and addresses and another section for the alphabetized Surnames. This is said to be useful for Missouri researching. The index is soft-bound, 59 pp., and is available for \$5.00 + 0.85 postage from St. Louis Genealogical Society, 1695 South Brentwood Blvd., Suite 203, St. Louis, MO 63144.

New Microfiche Records:

The Branch Genealogical Library will be getting thousands of new microfiche sheets during the coming year.

Look for census records (indexes) to be available on microfiche as well as many of the most used reference books from the Salt Lake City Library to be put on microfiche. Also, sometime this fall there will be another new IGI available.

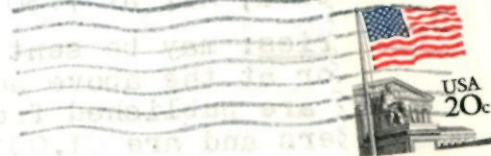
We will keep you informed as to new arrivals.

If you visit the Branch Library here in Missoula, be sure to fill in your area of research in the sign-in book. This will assist the librarian in purchasing new books.

Querries:

VASSER Arlene DE WITT, 1704 Driftwood Dr., Bozeman, MT 59715,
VASSEUR would like to know the parents names and place of birth
LEVASSEUR in New Brunswick, Canada, of Cloff/Cluff/Clofa/Clopha
VASSER/VASSEUR/LEVASSEUR who was b 27 Jan 1853, m ca.1876
in ?Whitehaven, Luzern Co., PA, to Amanda Jane KRUMMIS/
KUMMIS, d26 Oct 1923 in Missoula MT. Places of residence
were New Brunswick, Canada; Whitehaven, PA; Colorado and
Montana. Descendants in Missoula are Robert Vasser and
John/Jack Vasser; in Billings, Paul Vasser; in Great
Falls, Bruce Vasser.

WESTERN MT GENEALOGICAL SOC.
P.O. BOX 2714
MISSOULA MT 59806



*Paulette Paypart
415 E. Main Apt #1
Missoula Mt 59801*